



Clark Street, London, E1

BUTLER  STAG





**\*Short Let 3-4 Months\***  
**A wonderful opportunity**  
**to reside within a stylish**  
**studio apartment on**  
**Sidney Square, a short**  
**distance from the**  
**transport hub of**  
**Whitechapel station.**



- Short Let of 3-4 Months
- Recently Refurbished
- Vibrant and Central Pocket of East London
- Furnished
- Modern Studio Apartment
- Direct Access to South-Facing Communal Gardens
- Whitechapel Station Moments Away
- Available Now!

Situated in the heart of the Sidney Square conservation area, this modern apartment is perfectly positioned for access across the capital, whilst also enjoying local conveniences within a vibrant and centrally-located pocket of East London.

Featuring a generously-sized living space / bedroom which opens out via French doors onto a secluded south-facing communal garden for residents to enjoy, the apartment has recently been refurbished and further comprises of a tastefully updated kitchen and bathroom.

Whitechapel is only a short walk or cycle from both the River Thames and the City, offering a diverse range of local amenities, including the famed Punjabi restaurant Tayyabs, the much-loved Rinkoff bakery and several highly-rated coffee shops. Nearby Spitalfields and Shoreditch offer further opportunities for dining, entertainment and shopping.

Ideally suited to a single professional seeking a comfortable and very well-located short-term option, this excellent studio is offered furnished and is available immediately.

EPC Rating C  
 Council Tax Band B







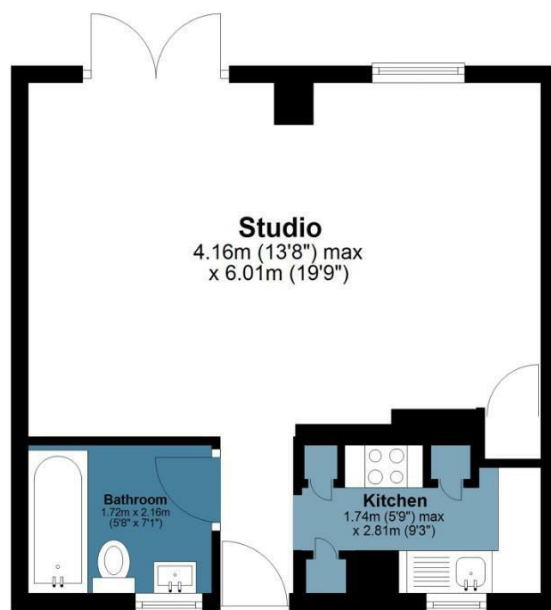
## Woollen House

Approx. Gross Internal Area 36.3 Sq M ( 391.2 Sq Ft )

BUTLER & STAG

### Ground Floor

Approx. 36.3 sq. metres (391.2 sq. feet)



Measurements are approximate and for illustration purposes only. While we do not doubt the accuracy and completeness, we advise you conduct a careful independent assessment of the property to determine monetary value.  
© @modephoto.uk www.modephoto.co.uk

IMPORTANT NOTICE - These particulars have been prepared in good faith and they are not intended to constitute part of an offer or contract. We have not performed a structural survey on this property and the services, appliances and specific fittings have not been tested. All photographs, measurements, floor plans and distances referred to are given as a guide and should not be relied upon.

BUTLER & STAG

☎ 020 8102 1236

🏠 508 Roman Road, Bow, London, E3 5LU

✉ bow@butlerandstag.com

[www.butlerandstag.uk](http://www.butlerandstag.uk)